



## APPLICATION

### ADMISSION REQUIREMENTS

### NOMINATION PROCESS

Deadlines:

March 15th to April 30th, 2024

March 15th to September 30th, 2024

### APPLICATION PROCESS

May 20<sup>th</sup>  
October 20<sup>th</sup>

#### Application documents:

✓

✓

✓

✓

✓

✓

# ACADEMIC CALENDAR

Exchange students are encouraged to arrive early  
(prior to program/Spanish course start)  
to secure accommodation and  
must arrive no later than the day before the first day of the term.

## FALL TERM 2024

Exams dates will be set by Program Management and could be any date in December.

## SPRING TERM 2025

stay until the end of the scheduled exams

## ACADEMIC INFORMATION

### COURSES OFFER AND ONLINE REGISTRATION

---

Semester Workload:

### ONLINE BIDDING REGISTRATION

Fall term: July

Spring term: November

### LEARNING AGREEMENT

Online Learning Agreement

Note for students:

---

## ACADEMIC INFORMATION

**ESADE EXCHANGE INFORMATION & MOODLE WEBSITE**

**COURSE ATTENDANCE**

**ASSESSMENT**

**EXAMS ACCOMMODATION**

**TRANSCRIPTS**

## ORIENTATION PROGRAM

### WELCOME SESSION AND SPANISH LANGUAGE COURSE

Spanish language course

Welcome Session

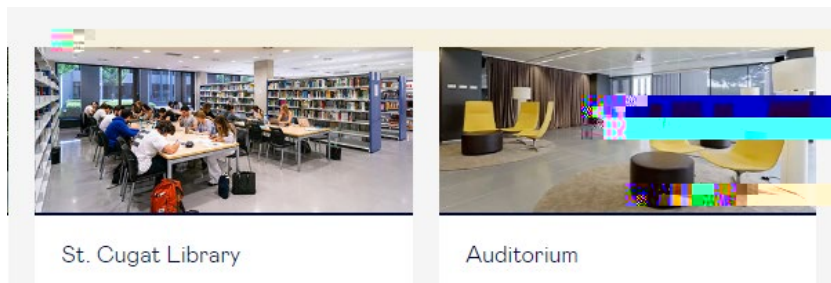
Esade International Student Association

buddy service



## NON-ACADEMIC INFORMATION

### LOCATION & CAMPUS FACILITIES



St. Cugat Library

Auditorium





## NON-ACADEMIC INFORMATION

### HEALTH INSURANCE

required to have valid medical insurance coverage  
*Proof of health insurance with international coverage will be required to complete registration.*



### MONTHLY COST OF LIVING

(approximate, depending on lifestyle)

Accommodation	500-700€
Public Transportation	40€
Eating Out	215-320€
Groceries	250-400€
Sports	45-80€
Miscellaneous	200-500€

**NON-ACADEMIC INFORMATION**

**ENTRY VISA AND RESIDENCE PERMIT**

**STUDENTS FROM EU COUNTRIES**

**STUDENTS FROM NON-EU COUNTRIES**

**NOTE:**

## NON-ACADEMIC INFORMATION

### PSYCHOLOGICAL & COUNSELLING SERVICE

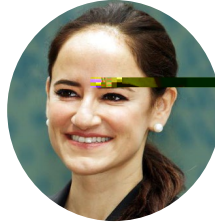


Do Good. Do Better.

## TEAM

### International Academic Relations Unit

Prof. Patricia Saiz



Ms. Araceli Domènech



Ms. Paula Niembro



Ms. Julia Anglès



Ms. Caroline Beckershaus  
Mr. Marcos González

*Non-Academic Help Desk*

### Law School

Prof. Pedro Aznar

Ms. Eva Mestres

*Academic Help Desk*

Ms. Silvia Romboli

PACS (Psychological &  
Counselling Service)